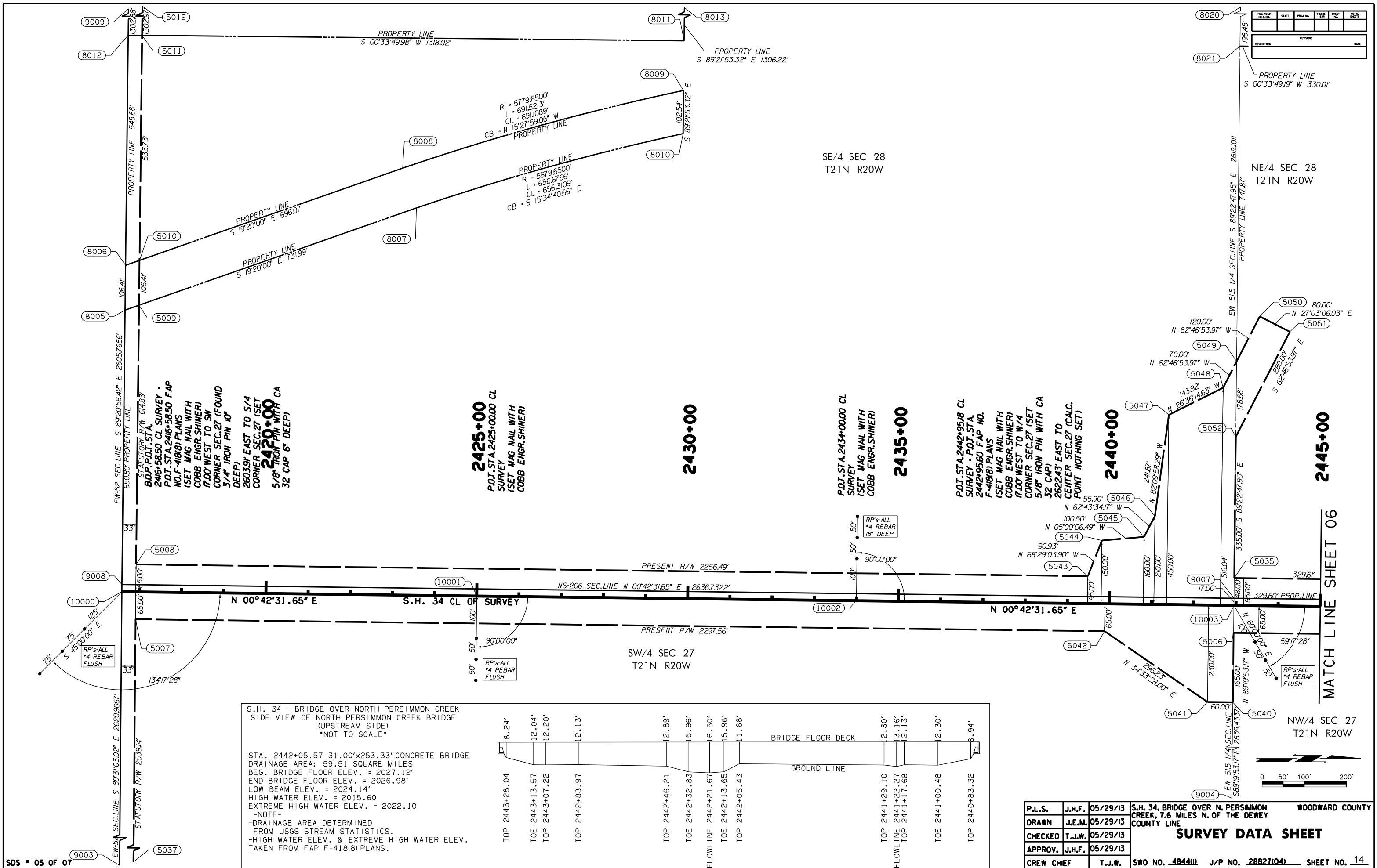
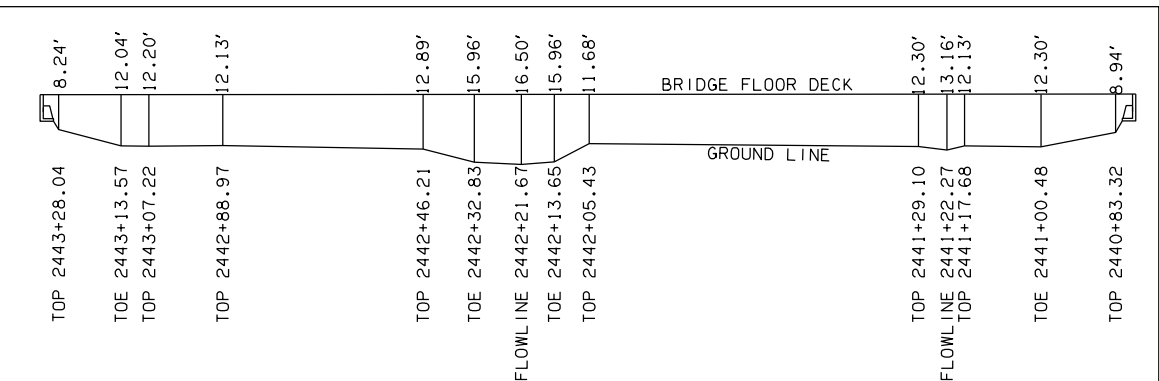


REV. NO.	DATE	DESCRIPTION



S.H. 34 - BRIDGE OVER NORTH PERSIMMON CREEK  
 SIDE VIEW OF NORTH PERSIMMON CREEK BRIDGE  
 (UPSTREAM SIDE)  
 \*NOT TO SCALE\*

STA. 2442+05.57 31.00'x253.33' CONCRETE BRIDGE  
 DRAINAGE AREA: 59.51 SQUARE MILES  
 BEG. BRIDGE FLOOR ELEV. = 2027.12'  
 END BRIDGE FLOOR ELEV. = 2026.98'  
 LOW BEAM ELEV. = 2024.14'  
 HIGH WATER ELEV. = 2015.60  
 EXTREME HIGH WATER ELEV. = 2022.10  
 -NOTE-  
 -DRAINAGE AREA DETERMINED  
 FROM USGS STREAM STATISTICS.  
 -HIGH WATER ELEV. & EXTREME HIGH WATER ELEV.  
 TAKEN FROM FAP F-418(8) PLANS.



P.L.S.	J.H.F.	05/29/13	S.H. 34, BRIDGE OVER N. PERSIMMON CREEK, 7.6 MILES N. OF THE DEWEY COUNTY LINE	WOODWARD COUNTY
DRAWN	J.E.M.	05/29/13	<b>SURVEY DATA SHEET</b>	
CHECKED	T.J.W.	05/29/13		
APPROV.	J.H.F.	05/29/13		
CREW CHIEF	T.J.W.			
SWO NO. <u>4844W</u> J/P NO. <u>28827(04)</u> SHEET NO. <u>14</u>				